

Hym3+

USER MANUAL

KUF Undersink Faucet



 **KYK** Co., Ltd.



| **Compatible Models** | Hym3+

Table of Contents	Safety Precautions	2
	Components and Name of the faucet.....	3
	Control Panel and Operating procedures	4
	Self-diagnosis and error detection.....	6
	How to install.....	7
	Hym3+	8
	Product Specifications.....	10
	Warranty registration.....	11

※ This user's manual is produced for common use and contains images or contents different from the purchased product.

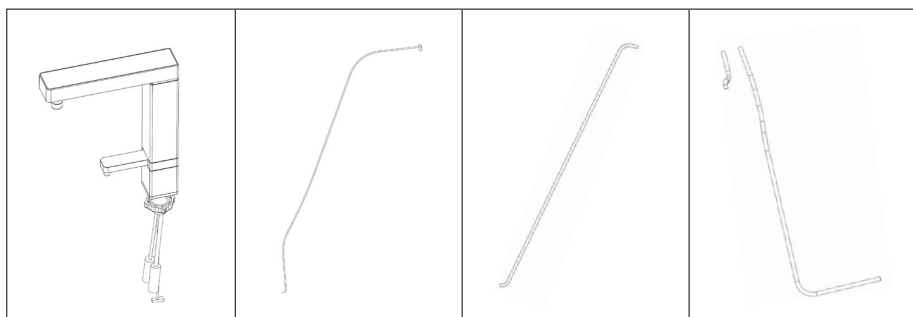
Safety Precautions



Before installing and operating this product, be sure to read the installation manual carefully and take special note of all Safety Precautions.

- Install the main unit under the sink on a flat horizontal surface and not on a sloping surface. This will cause the product to stop working.
- Install with the main unit under the sink in a position higher than the waste water drain outlet.
- Be sure to connect the units water inlet hose to the cold-water pipe before installing the main units. Connecting the units water inlet hose to the hot water pipe will cause damage to the units and it will not be covered under warranty.
- The hose from the main unit to the faucet must not exceed 50cm.
- The hose between the main unit and the faucet connected to it should not be kinked or bent. Water need to flow naturally and without restriction.
- Fix the outlet hose of post-washed water or acidic water deep into the drain.
- This product uses 220V only, and the power plug must be a 220V outlet with a ground terminal.
- Ensure the power plug is installed away from any wet water and where it can get wet. It needs to be kept safe and dry.
- Ensure the power cord into the main unit's body is installed away from any wet water and where it can get wet. It needs to be kept safe and dry.
- Be careful not to let water enter or damage the power plug. It may cause electric shock or fire.
- Do not install and use in a humid place such as a bathroom or outdoors, or near a place with fire or inflammable materials.
- Do not drop or disassemble the product.
- When not using the product for a long time, unplug the power plug from the power supply.
- Do not move the product while the power is connected.
- Do not wipe the product with thinner, benzene, wax, alcohol, or chemical cleaners etc.
- Do not use water supply that does not comply with the water quality standard law. Do not use, well water, ground water, contaminated water, hot water above 35°C, water containing metals, salt, lime, etc.
- If the product is leaking water or water is accumulated around the product, turn off the water valve and remove the power plug. Then submit to AS Customer Center.

Components



Faucet

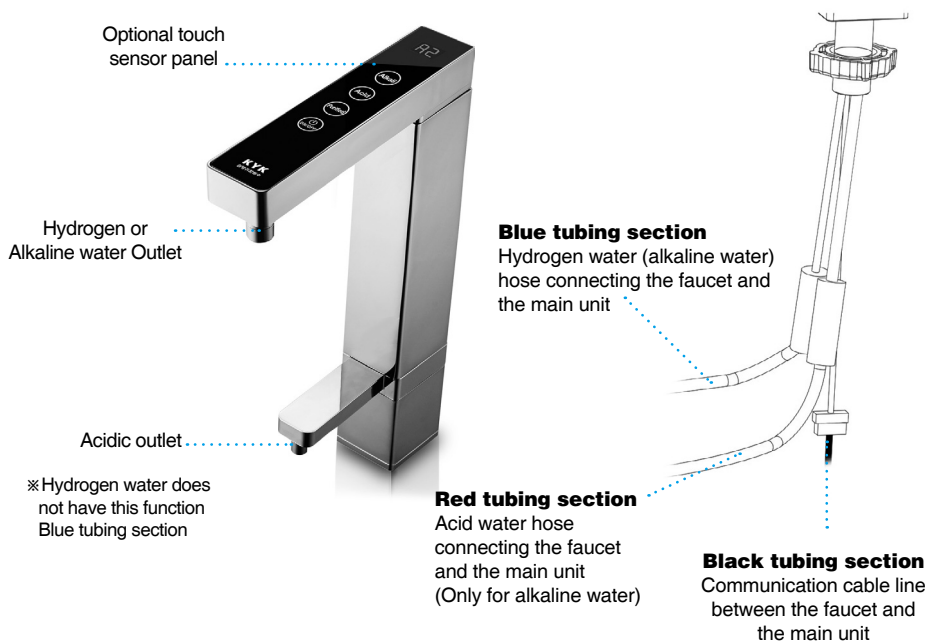
Communication
cable

- For hydrogen water :
1/4 tube (blue color: 2m)
- For alkaline water ionizer :
1/4 tube (red:2m, blue: 2m)

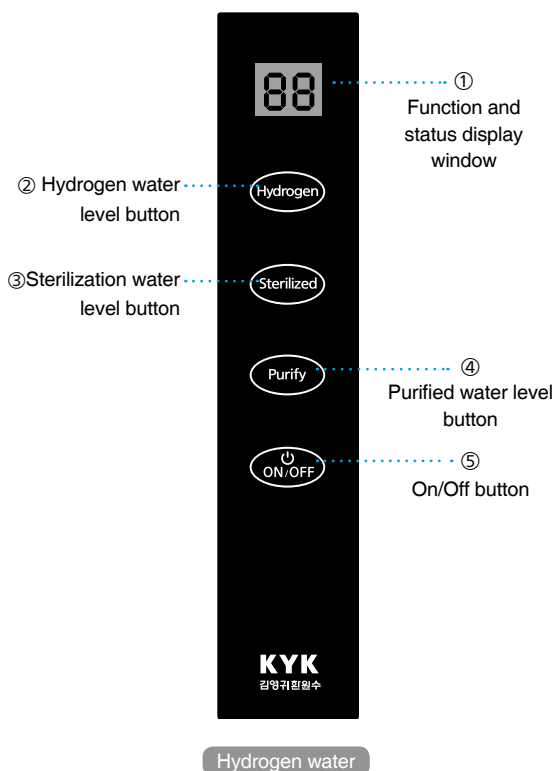
1/4 tube (white: 2m)

※ The main unit (separate) is installed under the sink is separate, and the exterior and functions of the main unit body may differ depending on the model.

Name of the faucet



Control Panel and Operating procedures



① Function and status display window:



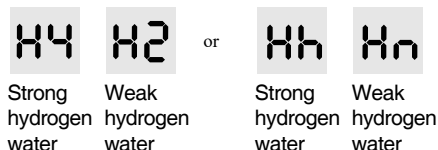
Selected the desired type of water and level. The selected water type will display on the screen. Touch the ON/OFF button to start the water dispensing.

Touching the ON/OFF button will stop the water dispensing.

Operating procedures

② **Hydrogen water level button:**

Whenever the button is pressed with the hydrogen water outlet button, the display window changes as shown below.



- ③ **Sterilization water level button:** This is a button for disinfecting and disinfecting water, and when the button is pressed, it is displayed as following



When dispensing water is stopped the level will automatically revert to the lowest level hydrogen water.

When dispensing water is stopped the level will automatically revert to the lowest level hydrogen water. If water is dispensed continuously for 20 minutes or 10L, the unit will automatically start a cleaning and washing cycle. Waste water will be dispensed as part of the cleaning cycle and will stop after the cleaning cycle is completed.

- ④ **Purified level button:** It is a water level button; the display will step through the following display:



- ⑤ **On/OFF button:** Touch the ON/OFF button to start the water dispensing. Touching the ON/OFF button will stop the water dispensing.

Self-diagnosis and error detection

- ① When it's time to replace the filter, order a replacement filter and then replace the filter.

A display will show in the display window when it is time to replace the filter as shown below.



- ② If there is a problem with the filter, order a replacement filter and then replace the filter.

A display will show in the display window as shown below, and a warning sound will sound.



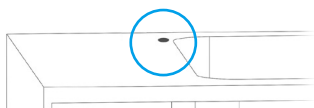
- ③ If there is abnormality level of water pressure, then display will show in the display window as shown below, and a warning sound will sound.



- ④ When there is an error in communication between the faucet and the main unit, a warning sound will sound with one of the following displays.

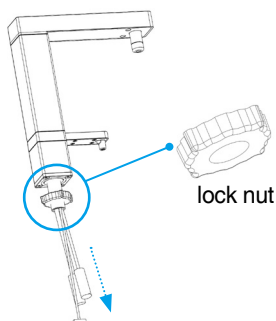


How to install

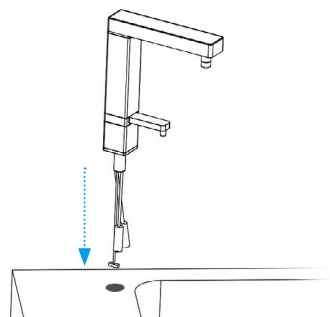


- ① After selecting an appropriate location to install the faucet on the sink bench top, use a $\varnothing 21$ mm drill bit or 21mm hole saw cutter to make a hole. Remove all sharp edges.

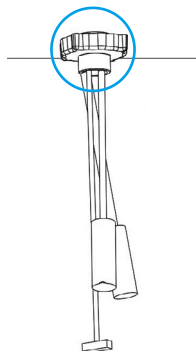
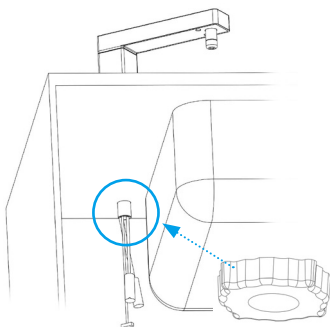
※Be careful when selecting the location to drill the hole. There needs to be enough space around the hole so that the faucet can sit flat on the sink bench top. Place Ozone sterilized water (acidic water) outlet so that the outlet is located well over the sink.



- ② When the hole is completed in the desired location, loosen the lock nut attached to the bottom of the faucet body and insert the lower end into the hole.



- ③ When the hole is completed in the installation location, loosen and remove the locking nut attached to the faucet body and insert the tubes into the hole.

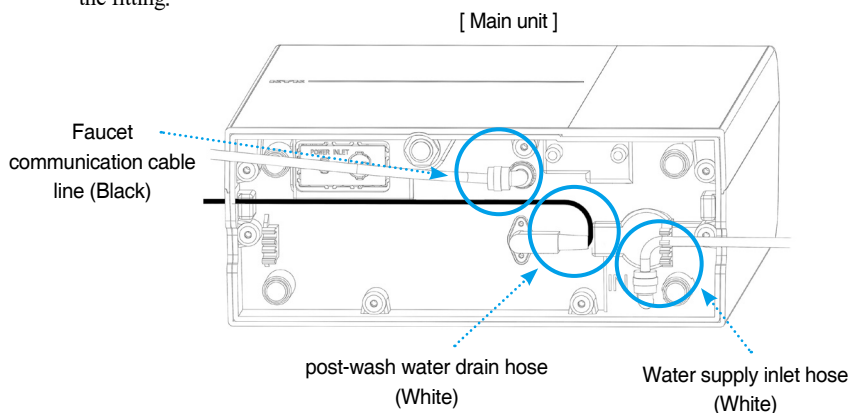


- ④ Before attaching the faucet to the hole, reassemble the locking nut underneath the sink. Tighten tightly to prevent loosening during operation.

I Hym3+ I

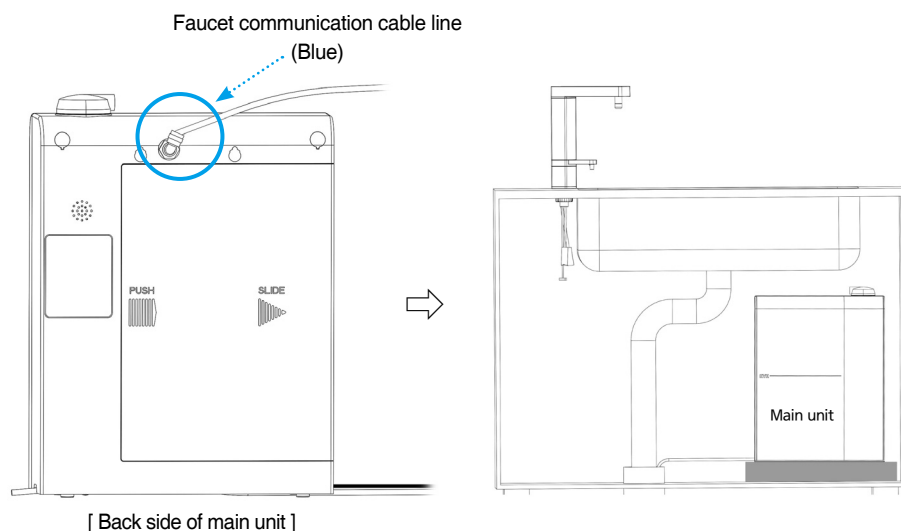
- ① After preparing the main unit to be installed under the sink, connect the raw imported water hose, acidic water outlet hose and signal cable to the bottom of the main unit.

※ When fitting the hose, make sure to push it all the way in so that the hose does not come out of the fitting.

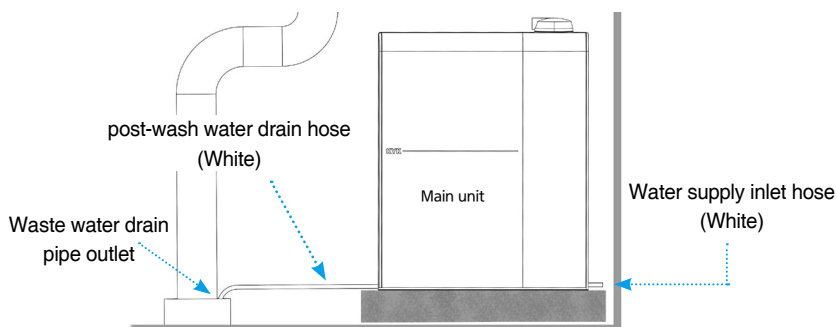


- ② Connect the blue hose on the back of the main unit as indicated below.

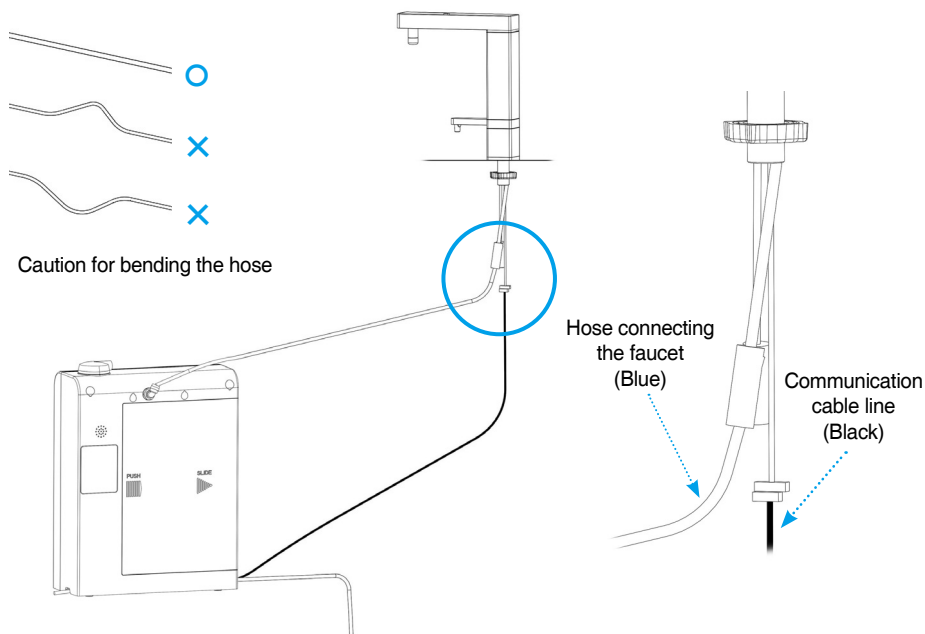
Place the main unit in a suitable position under the sink.



How to install – Hydrogen Water Hym3+



③ Insert the post-wash water drain hose into the waste water drain pipe outlet. This hose drains washing water during post-cleaning. If the height of the drain pipe is higher than the main body, use a pedestal or stand etc., and place the main unit higher than the drain pipe outlet. If the inlet of the waste water drain pipe is higher than the main unit, cleaning waste water may collect in the hose and cause the unit to stop working.



④ Connect the blue hose, and black hose(communication cable) to the faucet on the back of the main unit, and then connect the power. Check if it works properly.

Product Specifications



This product is required to connect to hydrogen and alkaline water products and install the main unit on the sink bench top and the outlet into the sink.

Product name	Undersink faucet (KUF)
Applied model (body)	Hym3+
Manufacturer	KYK Co., Ltd.
Address	#407~410, Sun il technopia, 555, Dunchon-daero, Jungwon-gu, Seongnam si, Gyeonggido, Korea
Serial number and date of manufacture	Refer to the back of the product
Dimension and weight	▪ Size: 45mm (W) x 210mm (D) x 290mm(H) ▪ Weight: 1.8kg
Power	The faucet is powered by the main unit via the communication cable.
Water supply	Undersink supply is connected directly to the cold-water supply.
How to operate	Touch sensor method
User temperature	5~35°C
Configuration	<ol style="list-style-type: none"> (1) Touch panel configuration (2) Consist of touch button and FND display, Press the touch screen buttons to display operation status (3) Faucet required a mina unit to operate, and receiving power from the main unit Filter replacement time
Filter replacement time	<ol style="list-style-type: none"> (1) The replacement filter life differs and depends on the product under the sink (2) When it is time to replace the filter. The display will change to indicate it is time to replace the filter. (3) If the quality of the incoming cold water is poor, then the outflow water could start smelling bad or the water starts to tastes bad. This means that the filter media is used. The filter must be replaced. Even before the filter replacement time is reached. (4) If the quality of the cold water supply is remarkably bad, then it is recommended to install a pre filter the pretreat the water before in inters the main unit (additional external pre-filter).

Warranty Registration

Terms of Warranty	one year parts and labor
Purchase Date	
Name	
Phone number	
Address	
Seller	
Name	
Address	

1. Our company will pay for repair, labor and shipping for one year guarantee performance and operations. If repair of the product is not possible, we will replace the product.
2. Customer will pay for repair charges including shipping under the following conditions:
 - (1) A malfunction occurs after the warranty has expired.
 - (2) The unit is damaged by the customer.
 - (3) Damage is caused by customer attempting to repair the unit themselves or the unit is repaired by an unauthorized service center.
 - (4) Damage is caused by using the incorrect electrical voltage.
 - (5) Damage is caused by using an imitation filter.
 - (6) Damage is caused by a natural disaster.
 - (7) Poor performance and failure due to failure to observe notices and precautions
 - (8) Damage is caused by exposing the electronics to water or moisture.
 - (9) Presented without this Warranty Certificate.



Seoul Office: #3705, Trade Tower, 511, Yeongdong-daer, Gangnam-gu, Seoul, KOREA

Headquarters Factory/ R&D Center:

#407~409 Sun-il technopia, 555 Dunchon road, Joongwon-Gu, Sungnam City,

Kyunggi-Do, KOREA TEL: +82-2-6000-0330 FAX: +82-2-6000-3070

e-mail: kykok@kykok.com

www.kyk.com