



UltraStream Manual

Benchtop and Undersink Installation

ULTRA PURE ALKALIZING IONIZING HYDROGEN RICH ANTIOXIDANT WATER SYSTEM

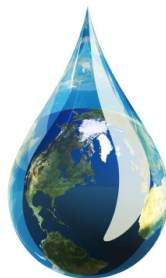
To ensure safety, please read this manual carefully before installation and follow the instructions herein.

Store this manual in a secure place for future reference

Welcome to the growing world tribe of AlkaWay water lovers!
Your new UltraStream by AlkaWay is a 'state of the art' water system.
It is designed by us to provide you with many years of ultra-pure alkaline ionized
hydrogen rich water.

Contents:

Important Information	3
Safety Tips.....	3
Service and Warranty	3
Detox Effects	3
Benchtop Installation	4-5
Changing the Filter Benchtop	6
Undersink Installation	7-11
Testing pH & Setting Flow	12
Troubleshooting.....	13
Changing the Filter Undersink.....	14
What to Expect.....	15
Recommended Tips.....	16-17
Our Story	18
Molecular Hydrogen	15 / 19
Refer a Friend.....	20



Introduction

We encourage you to read the manual carefully and
keep a copy of this manual for future reference.

AlkaWay and your vendor are not responsible for incorrect or
negligent application of this manual's directives.

Important Information

Molecular Hydrogen Production 'The Drip'

Your UltraStream may initially drip/spurt for short time after use. This is the result of the molecular hydrogen being created by our special O-Dobi alkalizing media as it reacts with water in your UltraStream. From more information about molecular hydrogen see page15.

If you decide you really won't be able to tolerate a drip, you can return your UNUSED unit (*Only valid within 30 days of purchase, Must be in new condition*).

The UltraStream Filter

We have University laboratory tested the UltraStream to 3600 litres (950 gallons), more than sufficient for a family of 4, each drinking 2 litres per day under normal municipal water quality conditions. We suggest 12 months or 3000 litres (800 gallons) whichever comes first.

Warranty

AlkaWay Australia offers **3 years warranty** (other countries contact your local distributor).

We cannot guarantee 12 months or 3000 litres filter life. All water filters are dependent upon the quality of your source water, and will fail if excessive contaminants and sediment enter the filter. (Unless there is a manufacturer defect).

If installing the UltraStream yourself, please remain in compliance with this manual to maintain your warranty.

You must use an AlkaWay vented faucet for all undersink installation.

See full warranty policy in the country of purchase.

Safety Tips

Do not run hot water through your UltraStream.

You must use a AlkaWay vented faucet for all undersink installation.

The UltraStream is not designed for use by young children without responsible adult supervision.

The UltraStream is constructed of EPA approved recyclable BPA-free plastics. All media and materials used are US and EU approved.

When unpacking, please remove and recycle unwanted packaging.

Detox Effects

New drinkers may experience a range of symptoms. Most common are body aches, headaches, foginess or skin conditions.

All of these conditions may be caused by stored toxins in the body being released, but if symptoms persist contact a registered medical practitioner. It's always wise to notify your general practitioner of any change to your health regimen.

Once you become a regular drinker you may experience a whole range of positive health symptoms.

You will find fellow user's stories on our website and we'd love to share yours!

AlkaWay is not liable nor responsible for any damage resulting from user installation contrary to instructions in this manual.

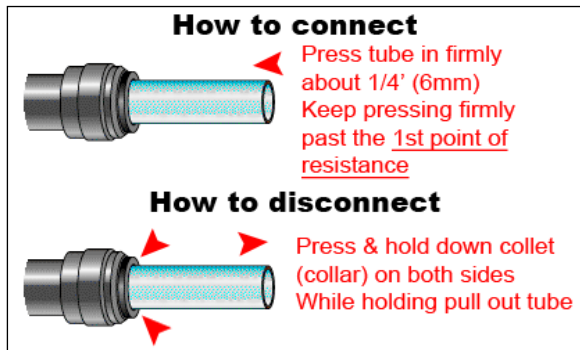
Benchtop Installation - Part 1

Handy Tips

Familiarize yourself with 'John Guest' fittings. These are special patented connection tools that allow ultra-simple connection of hoses and pipes. To attach a hose, all you need to do is push the hose into the fitting.

To remove, all you need do is push on the collet (ring) around the hose and pull on the hose at the same time, using butter knife or fingernail.

John Guest Connection



Parts List

1. Flow Diverter & Hose (benchtop only)
2. Spout
3. Cap
4. Main Filter
5. Base
6. Base Cover
7. Ring Adaptors (benchtop only)



Benchtop Installation - Part 2

1. REMOVE AERATOR FROM YOUR FAUCET

Most modern mixer taps have a aerator that can be unscrewed counter-clockwise by hand (make sure you keep this in a safe place, as often they are unique to each tap and hard to replace).

2. ATTACH DIVERTER TO FAUCET.

Screw the adaptor ring to the diverter (hand tight). Then screw the adaptor ring diverter assembly to the tap (use a little Teflon plumbers' tape if needed), taking care not to twist the hose. If you need the hose to be shorter... remove the hose by Unscrew the knurled collar from the diverter and pull off the hose from the diverter. Then cut the hose to the required length. Push the hose back onto the diverter and re-screw on the knurled collar tightly.

3. TURN ON WATER

Push the diverter pin to divert flow into your UltraStream.

4. FLUSH THE NEW FILTER

Run the ultrastream for approximately 5-10 mins at around 1 litre (0.26 gallons) per minute to remove filter dust residues and fully soak the filter media. Do not drink this water.

5. TURNING OFF

When you turn off the flow at your faucet, filtered water may still flow for 10-20 seconds. This is due to residual pressure that may build up inside the UltraStream's highly efficient filter. It will also drip for some time due to the power of the hydrogen generation in the filter.

6. ADJUST THE FLOW

Go to page 12

7. TROUBLESHOOTING

Go to page 13



Changing the Filter - Benchtop

1. Pull off the spout.
2. To give more grip put the UltraStream on its side and take off the base plate off the base.
3. Grip the base and turn the filter anti-clockwise to unscrew the filter.
4. Put the new filter on the base and evenly screw the filter on clock-wise (don't over tighten).
5. Replace the cap, spout and base plate (make sure you align the blue tap with the groove in the base plate).
6. Flush the new filter for 5-10 minutes at 1 litre per minute.
7. To reinstall the filter reverse the steps.

**We DO NOT
guarantee
12 months' filter life.**

All water filters are dependent upon the quality of your source water, and will fail if excessive contaminants and sediment enter the filter.



Undersink Installation

Congratulations on choosing the AlkaWay Undersink Kit for your UltraStream water system. By following the steps in this instruction sheet you'll have the best of both worlds - fabulous UltraStream water - and clear bench space, with minimum of fuss.

We have designed our undersink kit to be fully compatible with the UltraStream benchtop unit.

- Ceramic Faucet valves
- Manufactured in same USA factory
- Vented faucet design for safety
- John Guest attachments for simple install
- Video support for install (support.alkaway.com)
- Step by step instructions

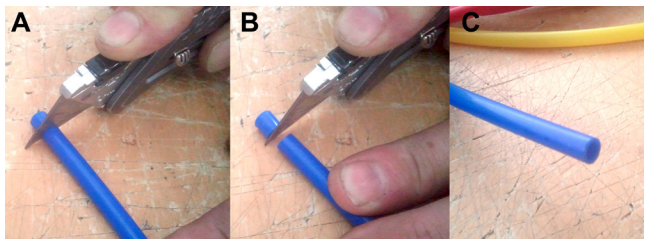
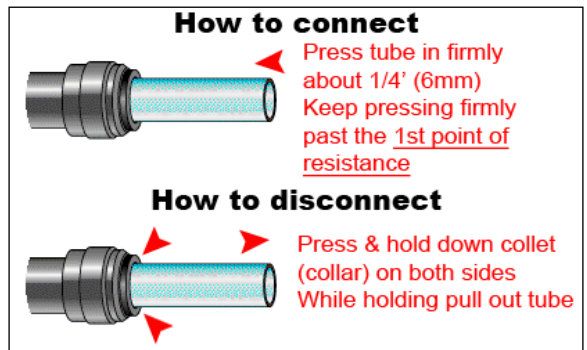
Handy Tips

Familiarize yourself with 'John Guest'. These are special patented connection tools that allow ultra-simple connection of hoses and pipes. To attach a hose, all you need to do is push the hose into the fitting.

To remove, all you need do is push on the collet (ring) around the hose and pull on the hose at the same time, using the John Guest Tool (or fingernail).

It's important to remember to ensure the end of the hose is cut cleanly and at right angles.

John Guest Connection



What you will need (other than what's in this kit)

- Electric Drill.
- Metal Hole Saw - 25mm (1 Inch) to 32mm (1 1/4 Inch) for stainless steel sinks.
For stone benches we recommend contacting a expert.
- Masking Tape.
- Rasp or Sand paper.

Undersink Kit Content



JOHN GUEST SIZE CONVERTER:
Connects
UltraStream to the
faucet via the **BI**
hose.



COLD WATER CONNECTOR



JOHN GUEST SPANNER
Used to REMOVE
Size Converter to
change filter
*(Keep it handy. You'll
need it to change,
a butter knife also
works).*



PRESSURE LIMITING VALVE (PLV)



TAP



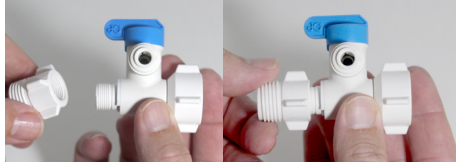
SPOUT



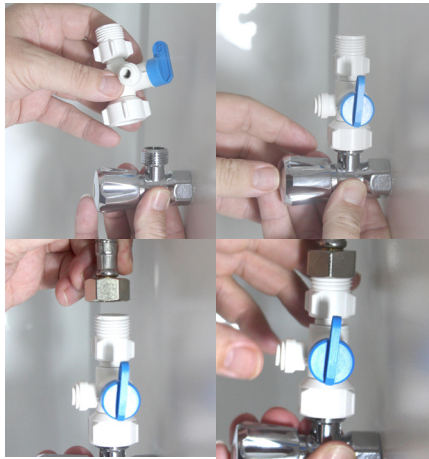
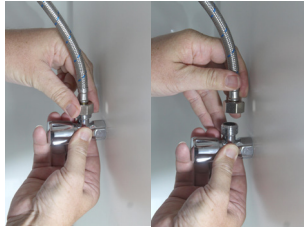
UNDERBENCH
PLATE
(Comes on faucet)

1: Connect the Undersink Connector.

1. Hand tighten the cold water connector pieces together.
2. Turn off the cold water supply. Using the shut-off valve below the sink or at the house water mains.



3. After shutting off the water open the kitchen faucet draining the remaining water out of the line. Turn on a (lower) garden tap to drain the water line.
4. Place a container below the sink, under the shut off valve and disconnect the cold water line.
5. Install the Cold water connector (Make sure it's turned OFF).
6. Reconnect the cold water line.



2: Position and Drill the Vented Faucet Hole

Locate a position on the bench top or sink which will ensure the UltraStream Vented Faucet spout can flow into the sink when running and turned off.

You can use the Underbench plate to help with placement and finding the centre, and make sure you can access this hole from under the sink/benchtop.

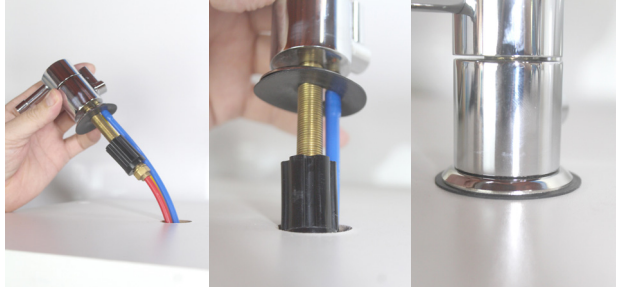
1. Place tape over the spot where you are to drill to allow the drill to stay centered.
2. Drill a hole between 25mm-32mm (1 inch to 1 1/4 inches) hole in sink top. Drilling in stone requires an expert.
3. Smooth any sharp edges using a rasp or sand paper so you don't damage the tubes when installing.

3: Install Vented Faucet

1. Loosen the brass nut and slide out underbench plate and place aside.



2. **Above** the sink > feed the tubes in to the drilled hole making sure the rubber seal is in place.



3. **Below** the sink > Insert underbench plate and hand tighten the brass nut (only use a spanner if necessary Do not over tighten).



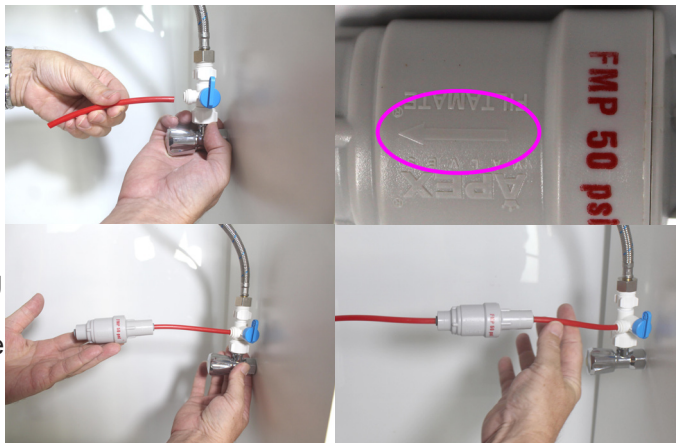
4. Push spout into the hole in the top of the faucet.



Note: The spout is removable and can swivel 360°

4: Install Pressure Limiting Valve (PLV).

1. Cut about 20cm off the **RED** hose (Cut at right angles and cleanly).
2. Check flow direction. The flow arrow must point towards the UltraStream away from the tap.
3. Install the PLV by pushing firmly each cut end of the hose into either end of the PLV.
4. Connect the **RED** tube to the PLV.



5: Install UltraStream Unit

(see John Guest Connector Usage Instructions on previous page)

1. Position the UltraStream in desired location under the sink.
2. Remove the bottom cover.
3. Connect the **YELLOW** tube to the bottom of the UltraStream.
4. (Optional) Replace the bottom cover.
5. Insert the John Guest Size Converter into the outlet on the top of the UltraStream. Then connect the **BLUE** tube into the top of the Converter as pictured.
6. (Optional) Turn off the water again and cut all the tubes to adjust length (see "How to cut tubes"). Make sure you leave enough tube length to easily change your filter.



Note: Cutting the tubes to be as short as possible undersink may seem a good idea, but remember that if you do choose to cut them, you will not be able to easily relocate the UltraStream to the benchtop for filter replacement.

Test and Flush

1. Make sure Cold water connector tap is turned off.
2. Turn water ON at mains or shut-off valve undersink.
3. Turn on Cold water connector tap and check for any leaks.
4. If a leak shows, repeat Step 7 points 1-3.
5. Now turn ON the vented faucet and check again for leaks.
6. Run filter for 5-10 minutes to flush.
7. Optional: You can adjust the flow rate also by adjusting the blue and white tap at the bottom of the UltraStream (see next section).

Testing pH and Setting Flow

Testing pH

How to test the pH of your water.

1. Add 2-3 drops of this reagent to 30ml of water to be tested.
2. Mix well.
3. Compare the final colour of the solution to the enclosed colour chart to get your reading (It's a good idea to use a white background).
4. pH Colour Readings pH<7 Acidic, pH=7 Neutral, pH>7 Alkaline.

Setting the Flow Rate

How to get the correct water flow rate from your UltraStream.

1. Turn your UltraStream on its side.
2. Locate the base plate with two holes and remove.
3. Locate the blue and white tap.
4. Full flow rate occurs when the blue and white tap is in line with incoming hose.
5. For best performance flow rate should be around litre per minute.
 - Easy way: For most installations all you need to do is to turn the blue and white tap 45 degrees.
 - Harder way: Put a 1 litre container under the UltraStream spout. Use a clock with a second hand and time 1 minute. The container should be full at the end of 1 minute.

For more help and support go to support.alkaway.com/

Troubleshooting

Slow or No Water Flow

- Check the tap on the bottom of the UltraStream is not turned off.
- Do you have any pre-filters attached? If so, remove the hose from the bottom of the UltraStream and make sure you are getting water flow.
- Make sure the hoses aren't kinked or twisted.
- If your UltraStream is slowly reducing in flow, it may be that it is nearing its end of use. If you continue to turn on your tap after it ceases flowing either your hose or your filter cartridge may fail.
- Your filter might be blocked and needs to be replaced.
- High Sediment water may require a special paper sediment prefilter to preserve your UltraStream filter's life.

Diverter sprays or leaks

- Apply plumbers tap to the thread of the diverter.

Leaking water from connectors

- Remove to tube for the John Guest connector and re-cut ends.
- Try Pushing the tube further into John Guest fitting.

*Need extra help?
go to
support.alkaway.com*

Leaking from top

- Press the spout down firmly.

Adapters won't fit my tap

- Contact us and we should be able to help. (Contact your local supplier or go to support.alkaway.com)

UltraStream Spurts

- This is due to the hydrogen content in the water. This water is the best to drink.

The Drip

- With some water sources, the water is more acidic. This then creates more molecular Hydrogen (the antioxidant) as it reacts with the O-Dobi media. The hydrogen is generated in gas form. This gas must get out of the UltraStream otherwise it will bulge and then leak. At rest after use, the gas pushes a little water out of the UltraStream which produces a drip. This drip will stop after a period of time. Remember this is not a leak. It is just the water in the UltraStream above the O-Dobi being pushed out.

No pH Reading

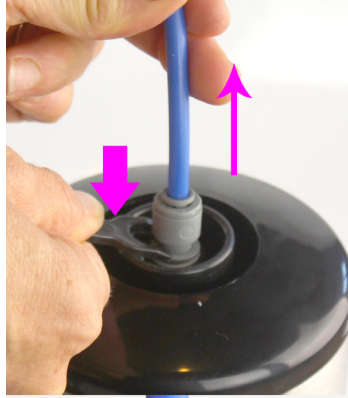
- Are you using liquid pH Reagent similar to what was supplied this unit.
- pH Reagent might be out of date or stored incorrectly.
- It might be time to replace your filter.

How to Change Your Filter UnderSink

1. Pull out the Grey (or White) Converter with the blue hose in it. Using the John Guest Tool (you can also use finger nail or butter knife) push down the grey collet as you pull the blue tube (see handy tips p7).



John guest tool



2. Pull off the cap and base plate.
3. Grip the base and turn the filter anti-clockwise to unscrew the filter.
4. Put the new filter on the base and evenly screw the filter on clock-wise (don't over tighten).
5. Replace the cap and base plate.
6. Push in the Grey (or White) Converter with the blue hose into the new filter.
7. Flush the new filter for 10 minutes on a low flow rate (It's a good idea to check for any leaks).

For videos, help and support go to support.alkaway.com/

What to Expect From Your UltraStream

People choose UltraStream for many reasons. Some buy for fluoride reduction, some because of the superior chlorine and chloramine reduction, some for heavy metals reduction.

Others buy because they have understood it is a great alternative to an electric water ionizer, delivering beneficial alkaline minerals independent of the amount in the incoming water. This is far superior to electric systems that depend upon alkaline minerals in the inlet water.

If you have rainwater you'll have virtually no alkaline minerals in your home supply, but the UltraStream adds beneficial magnesium and calcium.

Filtration

Some buy simply because they have concluded that as a water filter it is vastly superior to the majority of filters on the market, using fully approved and tested US made media, backed up by our University Laboratory tests and EU safety certification for the life of the filter.

Infused Molecular Hydrogen

Many of our newer customers ordered because they understand the importance of molecular hydrogen. They have researched the benefits of alkaline and hydrogen rich water. They have read enough of the 700+ scientific studies of its benefits and have also read how the UltraStream delivers almost 4 x the hydrogen of popular electric systems.

To get the maximum benefit of hydrogen rich water it's important to drink it as soon as possible after pouring from the UltraStream. H_2 is a gas that easily leaves its host.

Expect superb filtration of any municipal water. You may also expect that your UltraStream water will have an effect upon you when you begin drinking it.

Responses vary enormously. Most people say it's the best water they've ever tasted while others may take time to get used to the taste. The taste of your water is ultimately dependent upon your water supply and how our *O-Dobi* hydrogen generating media responds to your water.



Tips

Starting Off

We recommend beginning with a high flow rate (tap fully on). This keeps the pH of the water low and although it doesn't make full use of the *O-Dobi*, it allows your body to become accustomed to your new water.

We suggest 1-2 glasses a day, building to at least 2 litres per day, and reducing the flow rate to increase the pH and hydrogen capacity. In this way your body has time to adjust to the detoxifying, antioxidant and super-hydrating of the UltraStream water.

Water may take some time to flow, and when it does, it may sputter. This is caused by H₂ infusion in your water inside your UltraStream.

For most water supplies we recommend 1 litre per minute flow rate. This is adjusted by adjusting the stop valve in the base (see *Flow Control section*).

Going Away?

If you are going away for over a month we recommend drying out the filter (take filter off and leave on sink for a day or two to dry) Then store in a dark, cool & dry place (like the bottom of you pantry).

When you get back its always a good idea to flush the unit for 5-10 mins.

BEST PRACTICE: FRESH IS BEST

For maximum antioxidant effect try to drink a full glass at a time rather than sip it from a bottle during the day. Molecular hydrogen is the smallest known element and it begins to leave the water as soon as it is poured.

You'll derive most benefit from drinking as much as you comfortably can at one time.

To learn about this amazing health discovery we suggest a visit to www.molecularhydrogenfoundation.org



Transport and Storage

Because it's the smallest atom in the universe, hydrogen easily passes through most materials, including a well-sealed plastic bottle. We recommend only glass or metal containers, with a good seal/cap. Even though you can carry it with you, try to drink it ASAP because this will ensure you get the maximum benefit.

Plumbers

We apologise to the 'good' plumbers. We know you are out there! But we've had experience of plumbers who try to install UltraStream in their own way. That's why you should familiarise yourself with the installation instructions in this manual, especially if you are installing the undersink version. We DO NOT warranty incorrect installations and would much rather have a good happy relationship with you, our valued customer.

Do not allow your plumber to install the UltraStream with any other faucet.

Filter Life

The UltraStream filter has been tested in an independent university laboratory using municipal water up to 3000+ litres, based on 2 litres per person for a family of four.

We can't guarantee you will get that amount of water from your UltraStream before you need a filter change. All filters can only perform within the limits of the water they process. After years of experience, we found that some water holds more sediment than others. Sediment is what causes any water filter to block up. Your UltraStream filter may, therefore, last a longer or shorter time.

Sometimes contaminants or sediment in your water can block the filter, which may cause it to crack open. This is not manufacturing fault. It is a design function.

We strongly recommend that you change your filter at or before the recommended 12 month point. A water filter gathers toxins from your water, both organic and inorganic. When it becomes overloaded it may become a health hazard.



Our Story

UltraStream came about as a result of 16 years of research and development by the AlkaWay Australia team.



After sourcing and supplying electric water ionizers for 12 years, the UltraStream was created.

Why? Because a natural, simple, closer-to-nature alternative to the complexities and maintenance of the electric systems was an obvious need.

Not to mention a price point that excluded no-one.

The UltraStream gives cutting edge filtration far beyond normal filters, removing a huge range of modern contaminants.

It alkalizes using natural minerals instead of electricity.

It infuses your water with molecular hydrogen, making it far, far more than simply clean water.

It installs in minutes anywhere - on the bench or undersink.

It is designed in Australia and made in California, USA, using the best of American filter technology.

Tested For Life

Tested to expected life of filter (one year) by independent Australian University accredited test laboratory.

Tested for material safety to stringent EU standards.

Tested by AquaSciences LLC for molecular hydrogen infusion capability.

Plastics all EPA approved.

Filtration media US safety approved and tested.



Alkaline Water and Hydrogen Rich Water

The UltraStream produces both alkaline water and hydrogen rich water.

Alkaline water is water with higher levels of alkaline minerals. The UltraStream has its own 'storehouse' of magnesium and calcium beneficial alkaline minerals.

Molecular hydrogen in water is the subject of 700+ scientific studies of its many health effects. The non-profit Molecular Hydrogen Foundation has been established to further the education of the Western world in the use and application of molecular hydrogen.

Molecular hydrogen (H_2) consists of two conjoined hydrogen atoms. Water in the UltraStream reacts with *O-Dobi* magnesium media to create H_2 and infuse it into the output H_2O .

Scientific studies indicate a huge range of health benefits including;

- Selective Antioxidant
- Inflammation support
- Anti- Allergy
- Anti-Apoptosis
- Cell signalling support

Find out more about Hydrogen at www.molecularhydrogenfoundation.org





ALKAWAY

THE ULTIMATE WAY TO GOOD HEALTH



Do you have a story about your water?

We'd love to hear it -

AlkaWay Australia | www.alkaway.com.au

AlkaWay USA | www.alkaway.com

AlkaWay Canada | www.alkaway.ca

AlkaWay UK/EU | www.alkaway.co.uk

AlkaWay Support | support.alkaway.com