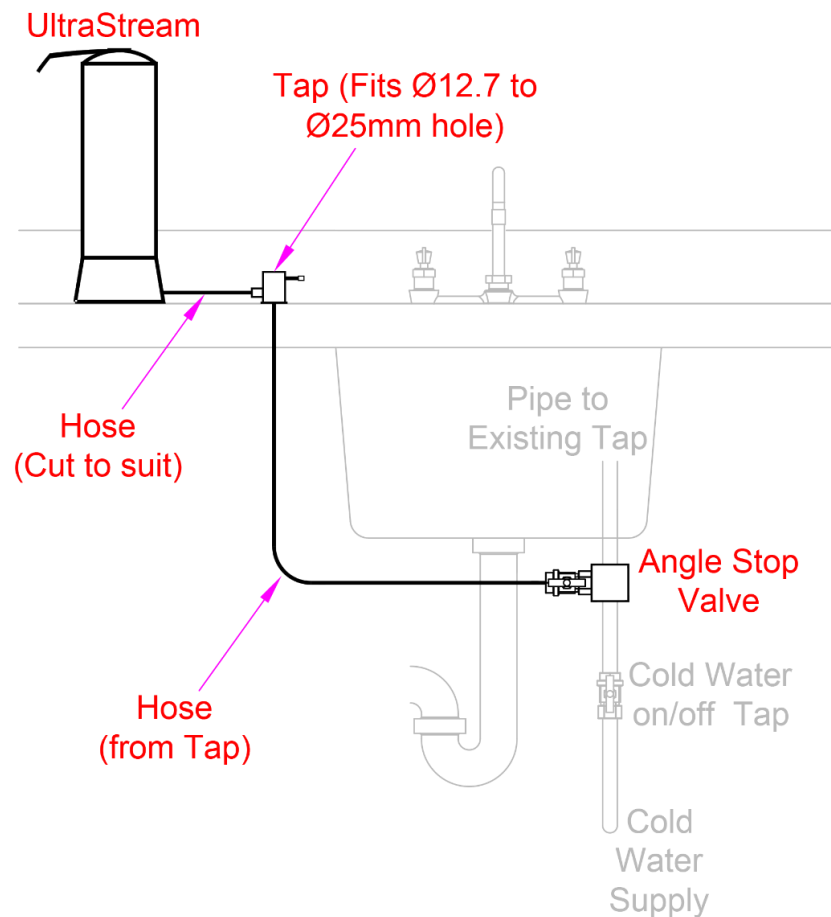


## To connect an UltraStream on your bench top to a dedicated tap

Included is everything you need to install your UltraStream on its own dedicated tap.



### Position and drill the tap hole

Locate a position on the bench top or sink with enough room to ensure the tap can be turned on and off and make sure you can access the hole from under the sink.

1. Place tape over the spot where you are to drill to allow the drill to stay centred,
2. Drill a hole between 12.7mm - 25mm (1/2" to 1" inch) hole in sink top. Drilling in stone will require an expert,
3. Remove burrs and any sharp edges around the hole before installing the tap.

### Installing the tap

1. Remove brass nut, washer (unscrew) and plastic black disc from the tap assembly,
2. Feed the tap tube through the hole in the sink and position the tap,
3. Feed the black plastic disc, brass washer and nut back onto the tube. Firmly tighten the nut into place.

## Cold water connection

1. Hand tighten the cold-water connector pieces together.
2. Turn off the cold-water supply. Using the shut-off valve below the sink or at the house water mains.
3. After shutting off the water open the kitchen faucet draining the remaining water out of the line. Turn on a (lower) garden tap to drain the water line.
4. Place a container below the sink, under the shut off valve and disconnect the cold-water line.
5. Install the cold-water connector (Make sure it's turned OFF).
6. Reconnect the cold-water line.



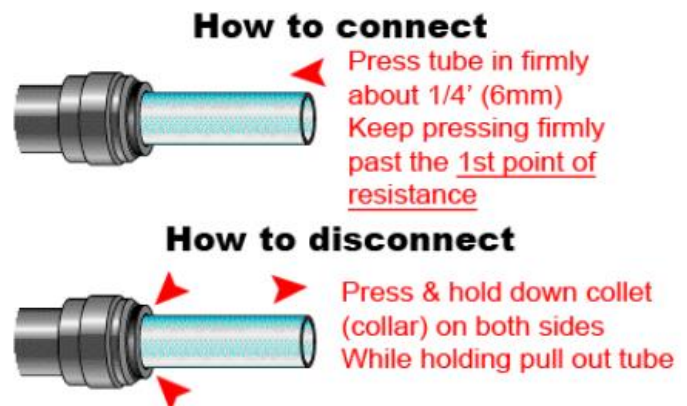
## Tube connections

Connect the tube into position as per the Schematic (refer to page 1).

Above the sink: use the supplied 1/4" tube connects the tap to the UltraStream. The UltraStream connection is inside the base. Remove the base cover to access connection.

Under the sink: The tube from under the tap connects to the cold-water connection.

Turn blue tap on the colder water connector check for leaks.



**Refer to the UltraStream manual to complete the UltraStream installation.**