



AlkaLina Hydrogen Rich Water and Alkaline Water System manual: Undersink Filter Add-on.

AlkaLina Installation: Adding to an existing filter

Congratulations on choosing the AlkaLina alkaline and hydrogen generating water system to be added to your existing undersink water filter.

By following the steps in this instruction sheet you'll be able to have the best of both worlds - pure water - and superb hydrogen rich alkaline water.

**KEEP IT
HANDY**

Here's what we're going to do.

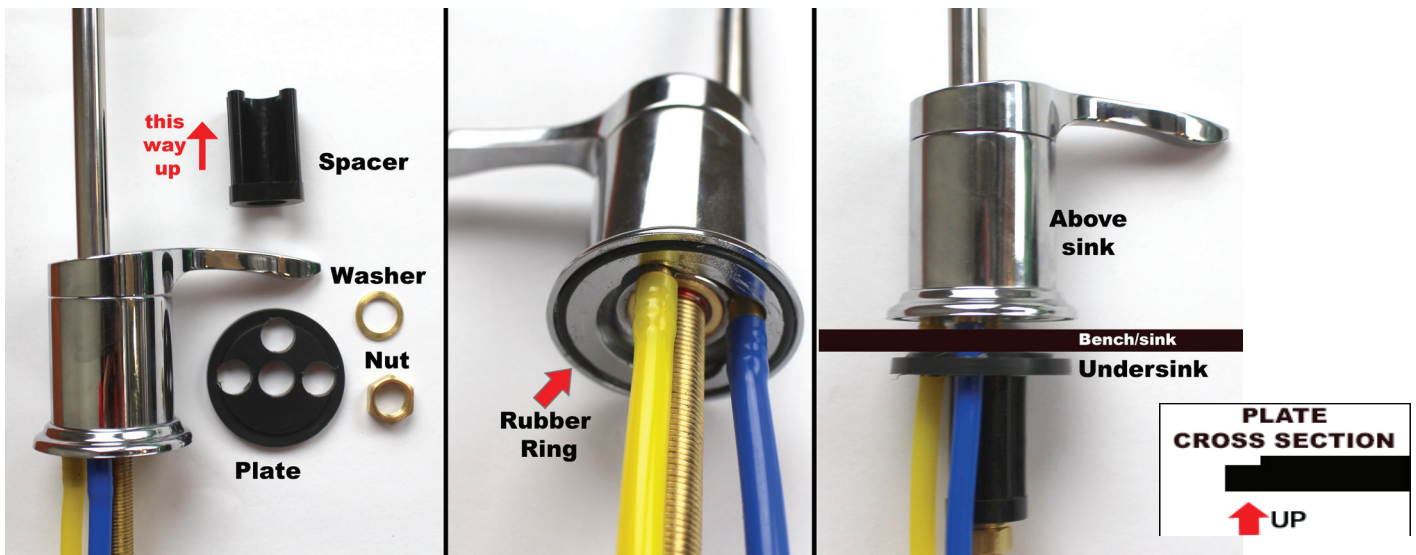
We are going to install the two AlkaLina filters after your existing water filter system. We are also going to install a special 'vented' Alkaway design faucet in place of your present faucet. We understand that there are myriad different water filters on the market and therefore we need to ensure yours is capable of the conversion. We need the hose from your water filter to your faucet to be 1/4" diameter. It's the most common of all hose sizes so it's a very good chance your filter will be adaptable.

Install Vented Faucet

1. Remove your existing non-vented faucet from the benchtop
2. Unscrew and remove only the Nut, Washer, Spacer & Plate (see illustration)
3. **Above** the sink > put the faucet in the drilled hole making sure the rubber ring is in place. This can be difficult and a little Vaseline will help the ring remain positioned in its groove.
4. **Below** the sink > slide the plate up the tubes making sure not to tangle the tubes. Check colour template on Page 1 for correct plate orientation and tube order
5. Then slide the Spacer down the red tube making sure it is positioned in the same way it was removed. (see illustration below)
6. Next screw on the washer and hand tighten the nut
7. Using a wrench tighten 1 to 1-1/2 turns (**do not over tighten**)
8. Push spout into hole in faucet



UNDERBENCH
PLATE -ON FAUCET
(Tube colours shown for
easy reference)



INSTALLATION

1. Turn off inlet water, open faucet. Remove OLD faucet and hose
2. Install new AlkaWay vented faucet.
3. Install Alkalina Cartridge and H2 diffusion cartridge.
4. Red Hose to outlet of present filter.
5. Yellow hose to input of AlkaLina.
6. Connect both filters at top.
7. Blue Hose to outlet of H2 Diffusion cartridge.



Why we use the Vented Faucet.

The Alkalina system is not designed to withstand mains pressure water.

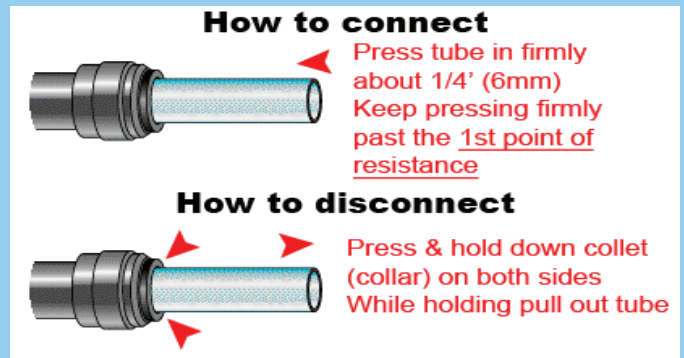
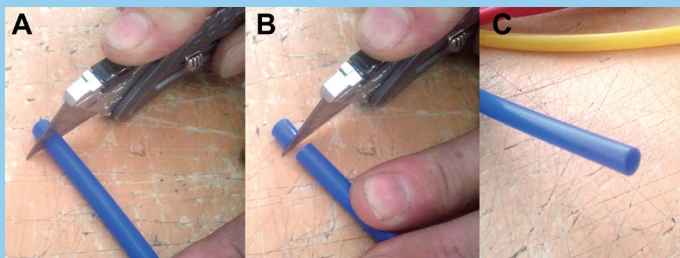
The vented faucet is designed to hold back mains pressure from the 2 Alkalina cartridges. The other reason for use of the vented faucet is that the AlkaLina produces infused, hydrogen-rich water. This means that H2 gas is generated in the AlkaLina. The gas pushes remaining water up the blue hose. The vented faucet allows the gas to escape.

Note: The H2 Diffuser cartridge is used to diffuse the effect of the H2 gas and make it come out of your faucet with less 'Whoosh'. You may experience some dripping when relatively new because of the gas pushing water up and out of the tube. Please note that the small amount of pure hydrogen means it cannot ignite.

DO NOT install the Alkalina with a standard faucet! The pressure will cause the cartridge to crack and leak.

How To Cut Tubing for John Guest Fittings

1. Use a very sharp knife or razor blade to get a clean right angle cut.
2. Check to make sure you have a **nice clean & even end**.



A Friendly Hint:

If it looks too hard, maybe it is. Sometimes your original system has been installed in a way that it takes up most of the room undersink. Find a handy friend or a good plumber familiar with Reverse Osmosis systems.

WHAT YOU HAVE RECEIVED

- ✓ 1. Alkalina Cartridge with integrated Quickfit connectors top and bottom
- ✓ 2. H2 Diffuser with integrated Quickfit connectors top and bottom.
- ✓ 3. Clips to mount filters
- ✓ 4. 1/4" Hose.
- ✓ 5. pH Reagent
- ✓ 6. Vented Faucet
- ✓ 7. Spanner for Alkalina Filter replacement



NINE STEPS TO INSTALLATION

- 1 Turn off your mains water at the tap feeding your filter. This will be under the sink on your cold water feed pipe. Turn ON your benchtop faucet. This will exhaust the pressure in the hose.
- 2 Determine where you want to install the two filters. Make locating marks and mount the clamps for the filters.
- 3 Locate the hose from the present filter to the faucet. To locate this go to the underside of the faucet and trace the hose back. Remove it from the filter. You can now remove the faucet (There will be a large ring to unscrew underneath the sinktop.)
- 4 Mount the clamps, then the filters in the clamps.
- 5 Attach the supplied white hose between the 2 Alkalina filter tops. Push hoses in hard, then push again to secure properly.. That's all you need to to make it watertight.
- 6 Attach the red hose on the vented faucet to the outlet of your present undersink filter.
- 7 Attach the BLUE hose to the outlet of the H2 Diffusion cartridge (the bottom)
- 8 Attach the yellow hose to the bottom (inlet) of the Alkalina. You now have all hoses connected.
- 9 Turn on your new faucet and your cold water inlet. Allow the water to flow through your benchtop faucet. Let it run for 5-10 minutes then turn off.

Congratulations! You did it!

YOUR ALKALINA MAY 'SPUTTER' FOR SOME TIME WHEN TURNED ON. THIS DEMONSTRATES THAT THE HYDROGEN ENRICHED WATER IS BEING CREATED. TRY TO DRINK THIS 'FIRST SHOT'.

REMEMBER TO REGISTER YOUR ALKALINA FOR WARRANTY.

REPLACING YOUR ALKALINA CARTRIDGES

Helpful hint: Order your replacements before your system needs it. In that way you have a chance for a simpler change over and no loss of precious AlkaLina water.



CHANGING YOUR FILTERS

Only the Alkalina - your first and biggest cartridge - has an internal filter. Only this cartridge needs to be removed, opened, and the inner alkalizer replaced.

- 1 Turn off your cold water inlet and turn on your faucet. This will reduce water pressure making your job easy.
- 2 Remove both hoses from the Alkalina cartridge. To do so, push a fingernail against the collar close to the hose. Push first and pull the hose after. (Diagram top P2)
- 3 Remove the cartridge from its clamps. Using the large ring spanner provided, undo the top cap from the AlkaLina. (This may not be easy! Try wrapping a tea towel around the lower section while using the spanner on the top).

- 4 Thoroughly wash and dry the opened cartridge then insert the new alkalizer cartridge. Screw on the cap, and reattach it to the clamps.
- 5 Attach the hoses you removed earlier by pushing them hard into the connectors.
- 6 Repeat the removal process with the H2 Diffuser cartridge. You should now have all hoses reconnected.
- 7 Turn on the cold water inlet tap. Turn off the faucet. Check for leaks.
- 8 Turn on the faucet. Let the water run for a few minutes then turn off.
- 9 *You've done it! Treat yourself with another glass of hydrogen infused wonder water!*



PAY FOR YOUR NEW FILTER BY HELPING A FRIEND.
Send us your interested friend's name and earn AlkaWay credit on his/her purchase! or...

ORDER YOUR NEW ALKALINA CARTRIDGE SET

USA
www.alkaway.com

UK
www.alkaway.co.uk

AUSTRALIA
www.alkaway.com.au

